



ORSUS DIRECTORY SERVICES

A Directory Service that enables a consolidated view of Authentication and Authorization data from multiple data directories.

Multiple data directories that exist today with scattered AuthN and AuthZ data cause major challenges for applications/systems to Authenticate and Authorize end users, services and devices. The most common challenges include:



Inability for applications to connect to multiple Directories



Directories may exist in different networks and geographies, “overhead” to setup network paths for every application and system



Operational overhead for the applications to manage configurations for multiple Directories



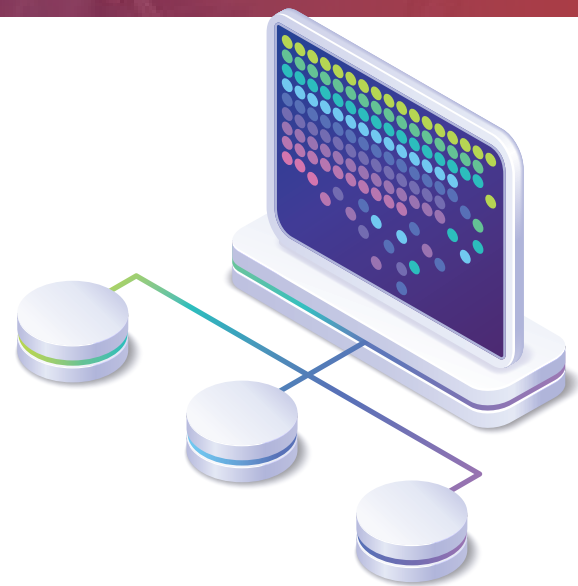
Network latencies while connecting to Directories in different networks/geographies



Inability to partition directory data, based on geographic or business policies.

The ORSUS Directory Service (ODS) provides a single point of connection for Applications/Systems to consume AuthN and AuthZ data.

ODS gives you a virtual view of multiple Directories, supporting all the LDAP operations, including proxying of the bind requests over to the respective backend Directories. The service is also capable of syncing the user and entitlement access data from multiple directories into its own unified directory that users and applications can access for authentication and authorization.

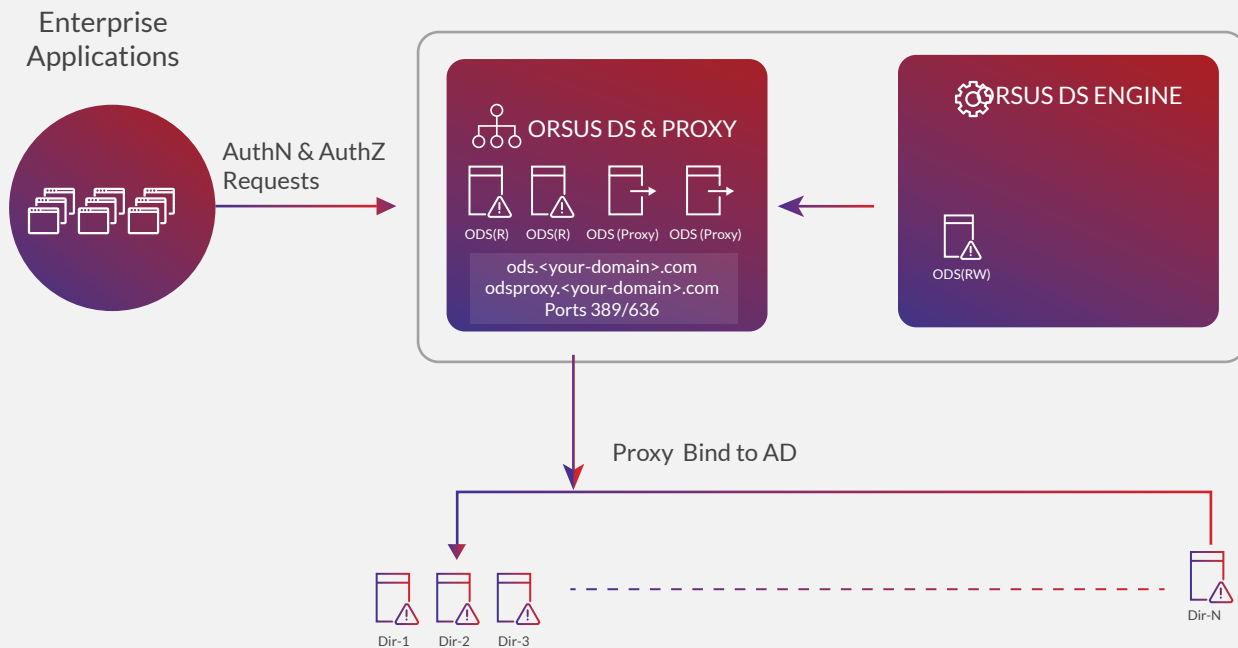


ODS CORE FUNCTIONS & BENEFITS

ODS offers a unified Directory that the Applications/ Systems can connect to for Authenticating and Authorizing end users. With the help of this unified directory, the Applications/Systems do not have to reach out to multiple data Directories that the Organizations may have distributed over different geographies.

- Single Directory containing AuthN and AuthZ data
- Proxies bind requests to the respective backend Directory for credentials still managed in the backend Directories
- Replicates AuthZ data from multiple Directories, hence reducing latency for Applications/Systems consuming this data
- Horizontally scalable to meet performance requirements
- Extensible across multiple geographies closer to the Applications/Systems connecting to the ODS

ODS ARCHITECTURE



ODS FEATURES

The ORSUS Directory Service has 2 major components.

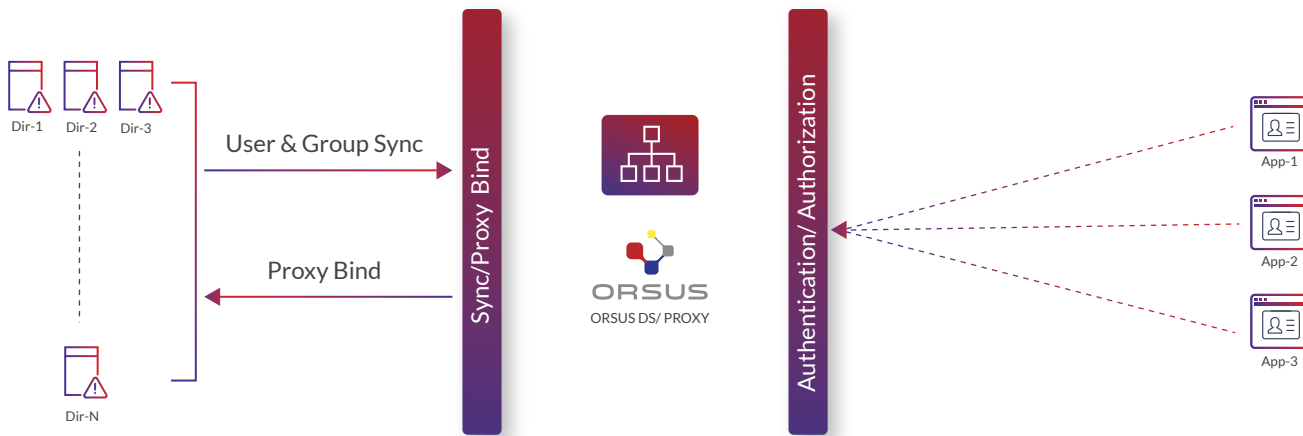
ORSUS Directory Proxy

This is a directory that gives a virtual view of multiple backend directories. All LDAP calls, including the binds, are proxied over to the backend directories.

ORSUS Directory Server

This is an LDAP Directory where the user and entitlement data from multiple directories is consolidated and synced periodically. The enterprise applications connect to this directory for authentication and authorization purpose. Authentication requests are proxied over to the backend directories, so passwords don't have to be replicated.

ODS — DEPLOYMENT SCENARIO



ODS — USE CASE

As users log into an application, the user credentials and their access entitlements are stored in multiple directories. The application can only be configured to use a single Directory for AuthN and AuthZ.

How can this be achieved?

ORSUS Directory Service gives a consolidated view of AuthN and AuthZ data and supports all LDAP protocols. The Application can be configured to connect to ODS. It handles the Bind requests from the Application by proxying them to the backend directory where the user credentials reside (passwords are not stored on ORSUS Directory Service). All other requests for AuthZ are either processed directly by the ORSUS™ Directory Server or proxied

