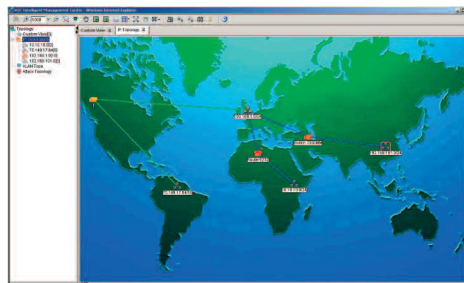


# H3C INTELLIGENT MANAGEMENT CENTER PROFESSIONAL EDITION



H3C IMC: Topology Map

## Overview

Intelligent Management Center (IMC) Professional Edition is next-generation management software from H3C—a self-contained, comprehensive management platform with the flexibility and scalability to meet the needs of advanced enterprise networks.

Built from the ground up to support the Information Technology Infrastructure Library (ITIL) operational center of excellence IT practices model, IMC's single-pane management paradigm enables efficient end-to-end business management to address the stringent demands of today's mission-critical enterprise IT operations.

Targeted at large, advanced enterprise IT and data center environments, IMC Professional provides scalability through distribution and hierarchical methods, as well as additional operating system and database support to meet the demanding requirements of those environments. IMC Professional is the top tier of architectural and engineering design using a service-oriented architecture (SOA) model to provide unparalleled resource, service and user management. Its modular design enables the effective integration of traditionally separate management tools.

IMC Professional enables enterprises to grow their management in scale and seamlessly accommodate new technologies. It is compatible with Windows and Solaris operating systems and supports the management of H3C®, 3Com® and third-party devices.

IMC is licensed based on the number of devices requiring management. IMC Professional Edition comes with support for up to 50 managed devices. Additional node licenses can be purchased to extend the node limit of IMC.

## Key Benefits

### Highly Flexible and Scalable Deployment Models

IMC Professional Edition delivers an extensive set of capabilities for managing large heterogeneous networks. This self-contained solution supplies scalability and high availability through a flexible distributed deployment model. With its modular design, IMC can be deployed across multiple servers to provide increased scalability and resilience. IMC Professional supports multiple operating system and database deployment options (Windows Server 2003/Windows XP/MS SQL Server 2005 or Solaris/Oracle).

### Powerful Administration Control

Multi-user, role-based management enables flexible administration and monitoring of an organization's network infrastructure. Your enterprise's System Administrator will have control over which IMC users can manage devices and device groups, and will be able to restrict the operations users can perform. Your System Administrator will also have access to full audit trails, which detail all network changes and identify who made them—this helps ensure that the necessary processes and controls are in place to meet compliance.

### Rich Resource Management

IMC provides powerful network discovery and topology, including a detailed inventory of the network and highly accurate depictions of how it is configured. Supported views include Layer 2 and Layer 3, as well as virtual LAN (VLAN) topology and custom view. The custom view enables users to organize and control the network infrastructure based on any organizational model. IMC's integrated Device Management panel provides comprehensive element management for both H3C and 3Com devices.

## Key Benefits (continued)

### Detailed Performance Monitoring and Management

IMC supports a complete fault-management process that provides in-depth correlation and analysis, real-time alarming, troubleshooting and experience capture. Easy-to-use performance monitoring detects bottlenecks and other network problems including those related to CPU, memory, and bandwidth utilization, devices response time and availability. TopN statistics enable the quick identification of the most loaded areas and devices on the network. Thresholds can be set to generate alarms on any monitor to quickly alert operators of any issues. IMC also provides the ability to set customizable events as well as alarm and event filtering rules to eliminate the possibility of an operator being flooded by alarms.

### Flexible, Centralized Reporting

Centralized report management simplifies an organization's report administration. IMC's flexible historical reports provide information necessary for network trend analysis and capacity planning, and offers pre-defined reports or enables users to define the parameters of their own reports using Report Designer. Reports can be viewed in a number of formats including .pdf and .xls, can be sent automatically via e-mail, or scheduled to run regularly.

### Simplified VLAN Management

IMC simplifies the deployment and management of VLANs across an enterprise network; this includes viewing current VLAN topologies and bulk deploying VLANs across the network.

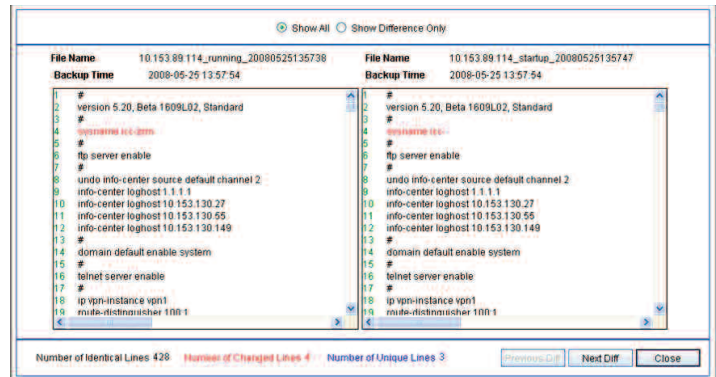


H3C IMC: Performance Monitor

## Comprehensive Configuration Management

The time required to roll out network changes and the likelihood of configuration errors are both greatly reduced with IMC's powerful Bulk Configuration functionality. Configuration baselining ensures that changes to the stable network configuration are flagged promptly.

The powerful Configuration Comparison feature provides the rapid identification of configuration differences, enabling your System Administrator to accept the new configuration or roll back to the original stable configuration. Additional functionality includes Bulk Backup and Restore, an extremely flexible agent management function that enables your System Administrator to have total control of the upgrade process.



H3C IMC: Configuration Management

## Access Control List Management

IMC simplifies the definition deployment and control of access control lists (ACLs) with effective policy-based control of network security and quality of service (QoS) across an organization's network infrastructure. ACL rule optimization ensures efficient use of ACL resources on the devices.

## Defense in Depth

As organizations struggle to comply with a variety of mandated IT governance standards such as those imposed by the Health Insurance Portability and Accountability Act (HIPAA), the Sarbanes-Oxley Act (SOX) and the payment card industry, they are looking to their strategic vendors to help them address these critical compliance challenges. The IMC platform can be seamlessly integrated with core security functions like H3C's Endpoint Admission Defense (EAD) solution, which provides various tools to help a company keep its proprietary data private by locking down the access layer of the network. Whether users are connecting from a wired or wireless LAN, or remotely over VPN, their identities can be verified, together with the configuration of the device they are using to access the network.



H3C IMC: ACL Management

## Specifications

Workstation requirements	<ul style="list-style-type: none"> <li>• Windows server: 3.0 GHz processor, 2 GB memory, 80 GB hard disk, 100/1000 Ethernet NIC</li> <li>• Sun Solaris server: 1.5 GHz processor, 2GB memory, 80 GB hard disk, 100/1000 Ethernet NIC</li> <li>• Hardware requirements, above, are minimums, and the actual requirements for any specific installation will differ according to the components installed and the number of devices managed. Please refer to the IMC Installation Guide for full details.</li> </ul>
Operating system requirements	<ul style="list-style-type: none"> <li>• Windows Server 2003, Service Pack 2</li> <li>• Window XP, Service Pack 2</li> <li>• Solaris 10</li> </ul>
Databases	<ul style="list-style-type: none"> <li>• An external database program is required with IMC. This is not included with IMC Professional Edition. Supported database programs are Microsoft SQL Server 2005 and Oracle 10g, Release 2 (10.2.0.x); a full version of either is recommended.</li> </ul>
Service modules	<ul style="list-style-type: none"> <li>• A selection of service modules can be added to IMC Professional to provide specialized, enhanced functionality:             <ul style="list-style-type: none"> <li>IMC UAM Module (User Access Manager)</li> <li>IMC EAD Module (Endpoint Authentication Defense)</li> <li>IMC WSM Module (Wireless Service Manager)</li> <li>IMC NTA Module (Network Traffic Analyzer)</li> <li>IMC MVM Module (MPLS/VPN Manager)</li> <li>IMC QoS Module (Quality of Service Manager)</li> <li>IMC UBA Module (User Behavior Auditor)</li> <li>IMC VSM Module (Voice Services Manager)</li> </ul> </li> </ul>

## Ordering Information

SKU No.	Product Name	Description
0231A0DM	H3C Intelligent Management Center Professional Edition v3.2	100-node license [CD]
3130A0CU	H3C Intelligent Management Center License	for additional 100 nodes
3130A0CV	H3C Intelligent Management Center License	for additional 500 nodes
3130A0CW	H3C Intelligent Management Center License	for additional 1,000 nodes
3130A0CX	H3C Intelligent Management Center License	for additional 5,000 nodes
3130A0CY	H3C Intelligent Management Center License	for additional unlimited nodes
	<ul style="list-style-type: none"> <li>• IMC Professional Edition, for use on Windows, can be downloaded from <a href="http://www.H3Cnetworks.com/imc_pro_trial">www.H3Cnetworks.com/imc_pro_trial</a>. This downloaded Windows version will run for 60 days. To remove the time limit, the user must register IMC Professional Edition v3.2 using a license key. To purchase a license key, order SKU 0231A0DL.</li> <li>• The Solaris version of IMC Enterprise Edition v3.2 is not available for download. The Solaris version is only available on the H3C Intelligent Management Center Professional Edition v3.2 CD, SKU 0231A0DL.</li> <li>• The H3C Intelligent Management Center Enterprise Edition v3.2 CD contains both Windows Server 2003 and Solaris versions of IMC Enterprise Edition v3.2.</li> </ul>	

Visit [www.H3Cnetworks.com](http://www.H3Cnetworks.com) for more information about H3C enterprise solutions.